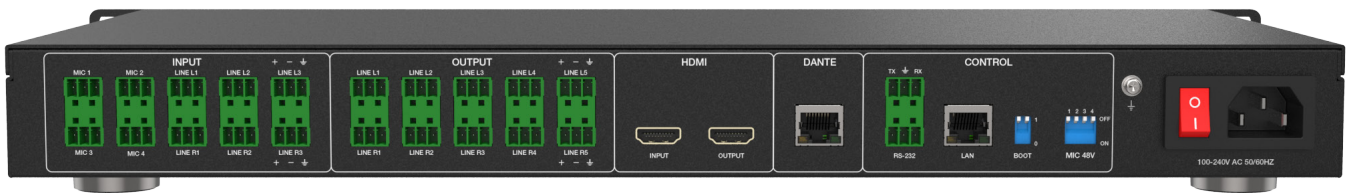




front side



back side

## DANTE 8x8 Digital Audio Processor

This digital audio processor is typically used for video conferencing, distance learning, and telemedicine. It features a 4-ch MIC inputs, 6-ch linear inputs, and 10-ch linear outputs. Each analog I/O channel has a knob to control the volume. A Dante port is also provided to ensure low latency in the audio process. Apart from HDMI audio embedding and de-embedding, it can also process audio signals with algorithms, such as: full-band Adaptive Echo Cancellation (AEC); Adaptive Noise Suppression (ANS); Automatic Gain Control (AGC); and Auto Mixer; to output a clear, clean, and resonant sound with a high signal-to-noise ratio. Concise but intelligent, the processor is designed for configurations without additional software debugging assistance.

### Featured Highlights

- 4x Mic, 6x Stereo balanced or unbalanced audio inputs
- 10x Balanced or unbalanced variable audio outputs
- 2x2 Dante in/out, HDMI streaming audio and ARC audio inputs
- Built-in 16x16 audio DSP
- 10-band graphic equalization and fully-adjustable limiting
- Volume, bass, treble, and mute controls
- Up to 18dB adaptive noise reduction
- RS-232, TCP/IP and PC program control
- Standard 1U rack size

## SPECIFICATIONS

HDMI Compliance	HDMI 2.0b
Amplitude-frequency (20Hz~20KHZ@+4dBu)	MIC input: -0.5 / -0.5dB
	Linear input: -0.2 / -0.2dB
THD+N (1KHZ@+4dBu)	≤ 0.01%
EIN (MIC input)	≤ -125dBu
SNR (linear input)	≥ 90dB
Dynamic Range	≥ 100dB
Channel Level Difference	-0.5 / -0.5dB
Channel Isolation	≥ 80dB
Channel Phase Difference	≤ 0.5°
Max Input Level	20dBu
Max MIC Gain	40dB
Input Impedence	20KΩ
Output Impedence	300Ω
Sampling Frequency	48KHZ
A/D and D/A Conversion	24Bit
Phantom Power	+48 VDC

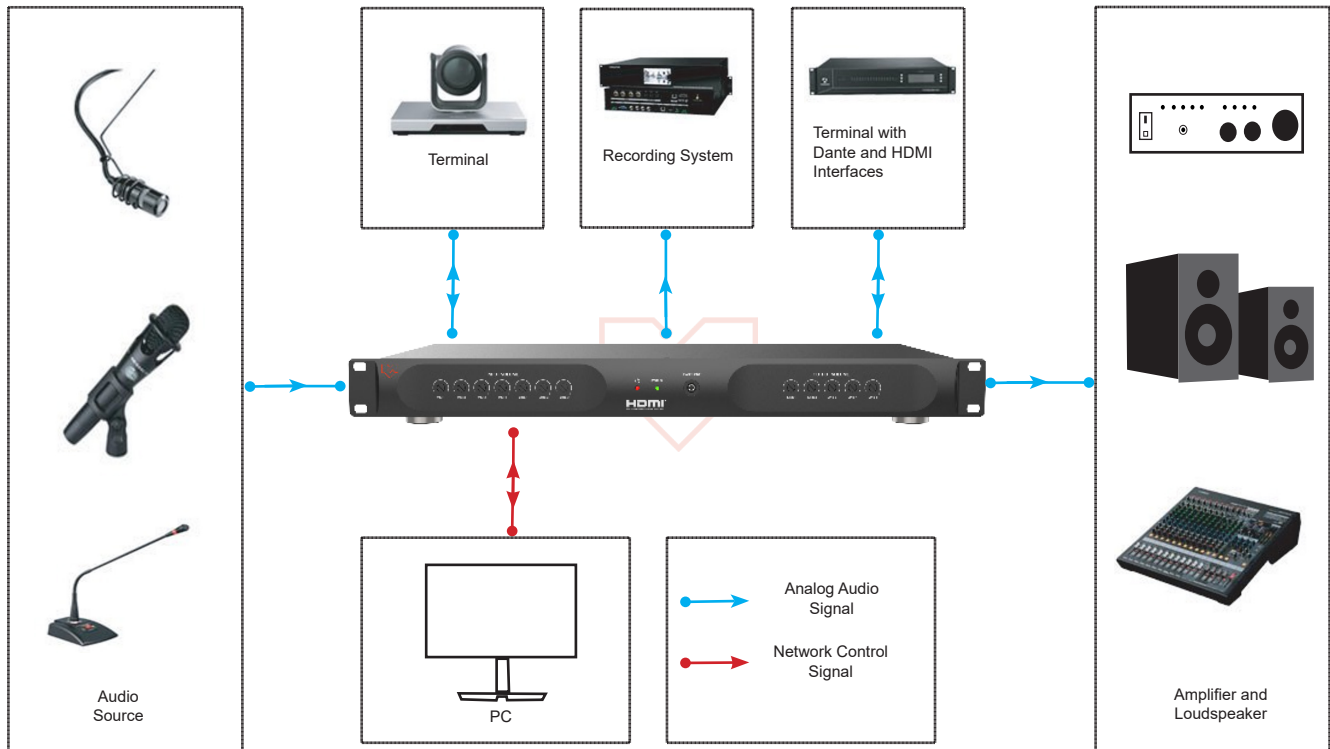
## CONNECTIONS

Inputs	4 × Balanced MIC [3-pin phoenix connector] 6 × Balanced LINE [3-pin phoenix connector] or 3 × Stereo Audio [3-pin phoenix connector]
Outputs	10 × Balanced LINE [3-pin phoenix connector] or 5 × Stereo audio [3-pin phoenix connector] 1 × Stereo audio [3.5mm L/R]
Controls	1 × LAN [RJ45] 1 × RS-232 [3-pin phoenix connector]
Digital Audio Interfaces	1 × HDMI IN [Type A 19-pin female] 1 × HDMI OUT [Type A 19-pin female] 1 × Dante [RJ45]

## MECHANICAL

Housing	Metal Enclosure
Color	Black
Dimensions	482mm (W)×250mm (D)×45mm (H)
Weight	2.9kg
Power Supply	AC 100 - 240V 50/60Hz
Power Consumption	11W(Max)
Operating Temperature	0°C ~ 40°C / 32°F ~ 104°F
Storage Temperature	-20°C ~ 60°C / -4°F ~ 140°F
Relative Humidity	20~90% RH (Non-condensation)

## APPLICATION EXAMPLE



Applications

Digital Signage, Conference Rooms, Operating Rooms and Audio-Video Rooms